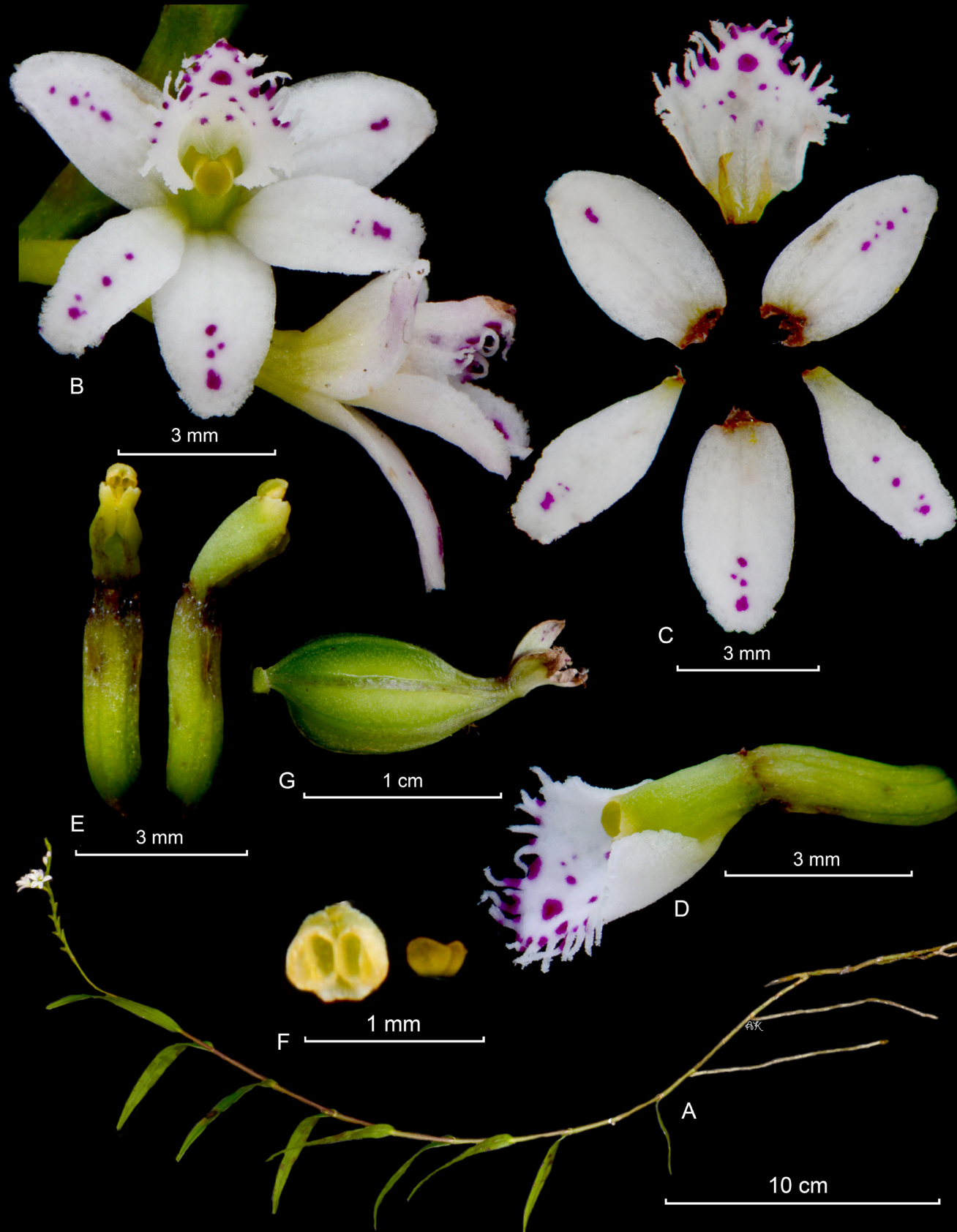


Epidendrum fimbriatum

KUNTH

NOV. GEN. SP. I: 351. 1816

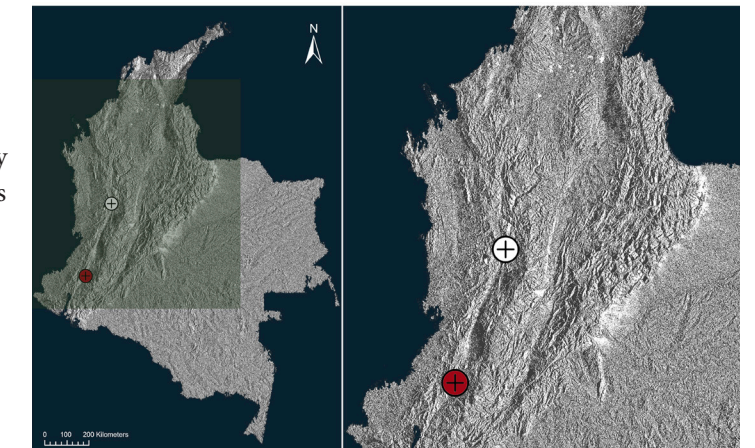


Type: Colombia. Crescit in Andibus Popayanesium, locis sybapricis Parami Puracensis et in convalli fluminis El Vinagre, alt. 1370 hex. A.J.A. Bonpland & F.W.H.A. von Humboldt s.n. (holotype: P).

Illustrated specimen: Colombia. Caldas: Manizales. Refugio Silvestre Río Blanco, al norte de la ciudad. En bosque secundario, 5°07'31" N 75°26'48" W, 2060 m, 7 de agosto 2015, A.P. Karremans 6709, J. Alomía, L. Henao-Mejía & J.T. Otero (LCDP voucher).

Terrestrial or lithophytic, sympodial, scandent *herb*, 35 cm tall including the inflorescence. *Roots* 8–10 cm long, basal, thick. *Stem*, scandent, simple, cane-like. *Leaves* up to 10, distichous, 4–6 cm long, subcoriaceous, linear-lanceolate, apex obtuse. *Inflorescence* terminal, racemose, successive, densely many-flowered, up to 10–12 cm long, rachis fractiflex. *Flowers* numerous, successive, non-resupinate, white, spotted with purple; no fragrance recorded. *Floral bracts* erect, ovate to oblong-lanceolate, conspicuous, ca. 5 mm. *Ovary* glabrous, striated, 1.5 cm long. *Sepals* narrowly ovate-oblong, apical margins slightly irregular, obtuse, 4.5 × 2.3–2.5 mm. *Petals* narrowly elliptic-oblong, apical margins slightly irregular, 4.5 × 1.5–1.7 mm. *Lip* rhombic-ovate, shallowly three-lobed, irregularly fimbriate, 4.3–4.5 × 4–4.3 mm, adnate to the column below the middle, with a pair of minutely pubescent keels. *Column* stout, sub-clavate, 3 mm long. *Rostellum* apical, slit. *Anther cap* obovoid, papillose, 4-celled. *Pollinia* 4, obovoid, laterally compressed.

Epidendrum fimbriatum is recognized by its terrestrial or lithophytic habit, scandent stems, distichous leaves, an apical inflorescence of numerous and successive non resupinate flowers. The tiny flowers are snow white spotted with purple and a fimbriate lip. It is widely distributed in the three cordilleras of the Andes in Colombia at high elevations where it can be found in large masses along roadsides.



LCDP: *Epidendrum fimbriatum* Kunth. A. Habit. B. Flower. C. Dissected perianth. D. Ovary with column and lip. E. Column, side and ventral view. F. Anther cap and pollinia. G. Capsule.

